



GMT MONTHLY MEMBERSHIP PROGRESS REPORT

Results as of: 6/30/2018

Multiple District 22

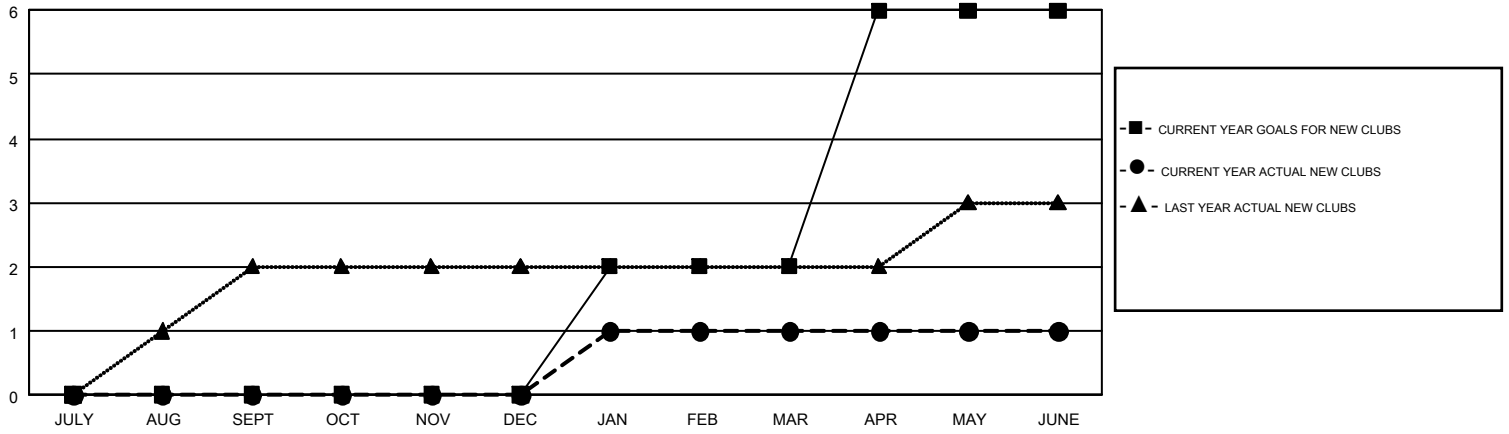
LOCATION: MARYLAND

GMT: MAHESH CHITNIS

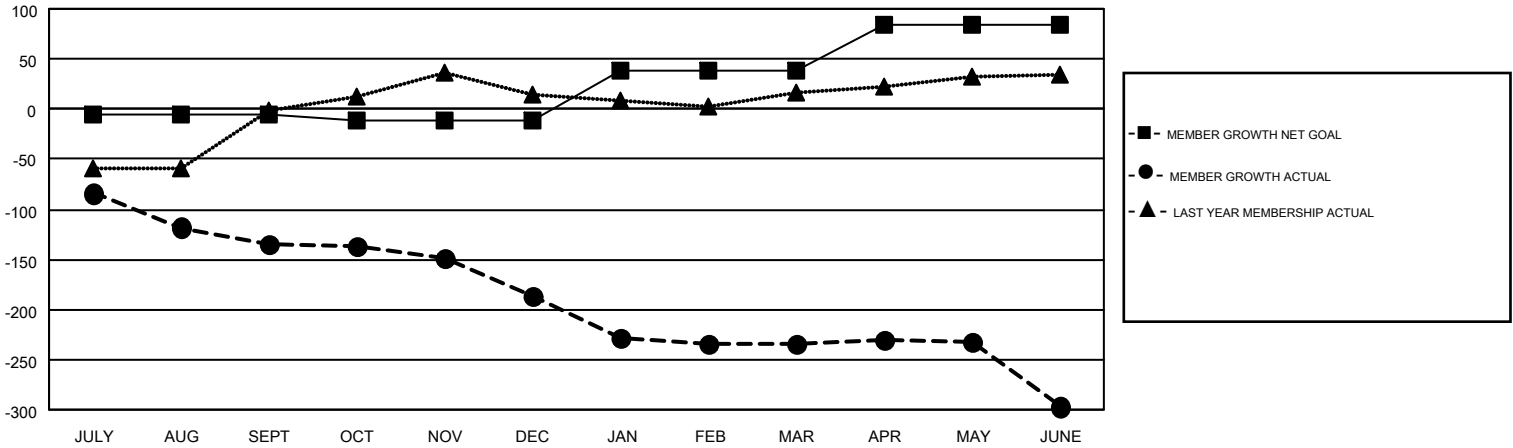
GMT CA 1

Clubs				Members			
RESULTS FOR 2017-2018				RESULTS FOR 2017-2018			
QUARTER	NEW CLUB GOAL	NEW CLUBS	DROPPED CLUBS	QUARTER	MEMBER GROWTH NET GOAL	MEMBER GROWTH ACTUAL	DROPPED MEMBERS ACTUAL (including transfers)
JULY/AUG/SEPT	0	0	2	JULY/AUG/SEPT	-6	98	213
OCT/NOV/DEC	0	0	1	OCT/NOV/DEC	-6	173	212
JAN/FEB/MAR	2	1	3	JAN/FEB/MAR	50	193	220
APR/MAY/JUNE	4	0	2	APR/MAY/JUNE	46	247	301

GOALS AND ACTUAL NEW CLUBS CUMULATIVE



GOALS AND ACTUAL MEMBERS CUMULATIVE



DROPPED CLUBS: 8	151 CLUBS OF 221 ADDED 1 OR MORE NEW MEMBERS	<u>GENDER DISTRIBUTION</u>	
<u>DROPPED MEMBERS</u>		MALE	4,431 (67.36%)
DECEASED	131	FEMALE	2,147 (32.64%)
CLUB CANCELLED	55	TOTAL FAMILY UNIT MEMBERS	
OTHER	760	FAMILY MEMBERS PAYING HALF DUES	
TOTAL	946	TOTAL FAMILY UNIT MEMBERS	
		FAMILY MEMBERS PAYING HALF DUES	

[CLICK HERE FOR CUMULATIVE MEMBERSHIP DATA](#)